

M15: REMOVING the transportation bolts



Remove the transportation bolts before connecting the instrument to the power supply!

When receiving your M15 instrument it will look like below:



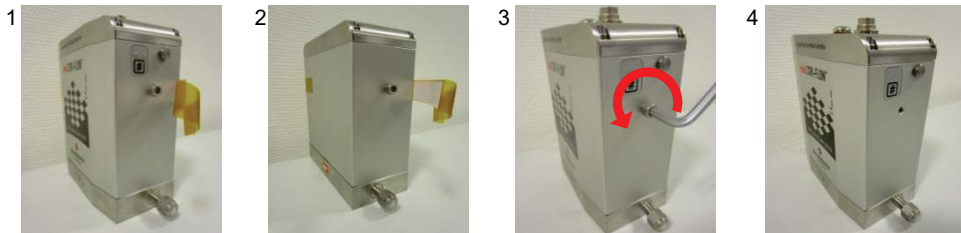
This bag contains:

- The instruction for removing and placing the transportation bolts.
- 2x blind nuts with O-ring for closing the opening in the instrument that appears after removing the transportation bolts.
- A hexagon key size 5 and an open-end wrench size 9



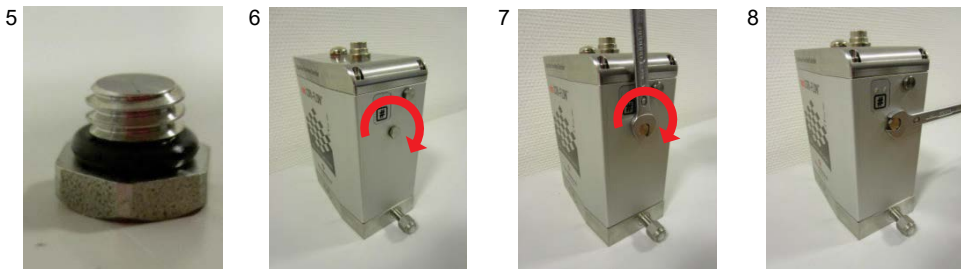
Removing the transportation bolts

- Remove the Warning label at both sides (see picture 1 and 2).
- Use the hexagon key for removing the two M6x20 Allen screws by rotating counterclockwise (3 and 4).
- Please store these bolts close to the instrument in case the instrument should be transported.



Placing the blind nuts (for IP65 and EMC protection)

- Take the blind nut (5) and place the nut clockwise and hand tight in the opening on both sides (6).
- Use the open-end wrench to tighten the nut by a clockwise rotation of a ¼ turn on both sides (7 and 8).



M15: RE-INSTALL the transportation bolts



Re-install the transportation bolts before transporting the instrument!

Needed tooling (included):

- A hexagon key size 5 and an open-end wrench size 9



Removing the blind nuts

Remove the blind nut from both sides (9, 10 and 11) by rotating it counterclockwise with the open-end wrench.

9



10



11



Placing the transportation bolts

- Take 2x M6x20 bolts for placing in the opening on both sides
- Place the screw clockwise and handtight on both sides. (12 and 13)
- Tighten the screw **only** at the instrument button side with a clockwise rotation of a ¼ turn (14 and 15)

12



13



14



15

